

# JULY *contents*

## COVER STORIES

- 30 **Let's go shopping** Beautiful buys to create oh-so-cosy nooks
- 108 **Chance to win a \$1 million luxury home**
- 110 **Truly marvellous mudrooms** For flower arranging, dog washing, laundry & more!
- 118 **The *HB* buyer's guide to fireplaces & heaters**
- 124 **Designer-approved tile choices for your bathroom**
- 134 **Classic recipes to inspire your winter baking**
- 145 **Before & afters** 37 pages of home makeovers

A COOK'S  
PARADISE  
page 48

## BEAUTIFUL STYLE

- 19 **In the know** What's hot in design inspiration and in stores
- 22 **Creative collection** Sisters Eloise and Sophie Rankine of Elph Ceramics create purposeful and joyful pieces
- 26 **Colour me happy** Anna Spiro on sticking to her vision decisions

## BEAUTIFUL SHOPPING

- 30 **Nook club** Amp up the comfort in under-utilised spaces
- 38 **Trend: Stars in stripes** Get in line for classic, striped homewares
- 40 **Top 10: Cover up** Your cheat sheet to the prettiest bedlinen
- 42 **Beauty: Glow up** Supercharge your skincare routine

## BEAUTIFUL HOMES

- 48 **Made to measure** Opening up and reworking a Melbourne bungalow has resulted in a perfectly tailored home
- 60 **State of play** Love, care and layers of fun, vivid colours were the vital ingredients in updating a heritage cottage
- 72 **High hopes** A hilltop location overlooking Toowoomba proved to be the ideal location for a family's new-build farmhouse
- 84 **Naturally modern** Contemporary design meets organic features in a Californian coastal retreat that exudes lived-in luxe

## BEAUTIFUL GARDENS

- 98 **Best in show** The standout entries at this year's Melbourne International Flower and Garden Show

## BEAUTIFUL DESIGN

- 110 **Mudroom marvels** You can hang up your hat and coat, but the multitasking mudroom can offer so much more
- 118 **Buyer's guide: Indoor heating** When it comes to heating solutions, there's a wide range of hot options to choose between
- 124 **Back to basics** A perfect pairing of tiles can be the secret to a bathroom that's both practical and gorgeous

## BEAUTIFUL FOOD

- 134 **Simple pleasures** Baker Tilly Pamment shares classic recipes for cakes that will win over friends and family from the first slice

## BEAUTIFUL BEFORE & AFTERS

- 145 ***HB*'s edit of covetable makeovers** Be inspired by our pick of incredible home transformations that tick all the boxes

## REGULAR FEATURES

- 12 **Staff** Who we are, where to find us and our Privacy Notice
- 15 **Ed's letter** Editor-in-chief Elle on the power of change
- 16 **Connect** What's happening in the world of *Home Beautiful*
- 186 **Style notes** Designer Greg Natale on his journey from a love of the TV show *Dynasty* to being an in-demand designer



134 BAKE UP



30 NICHE AND EASY



124 TILE FILES



162 LIGHT MOVES

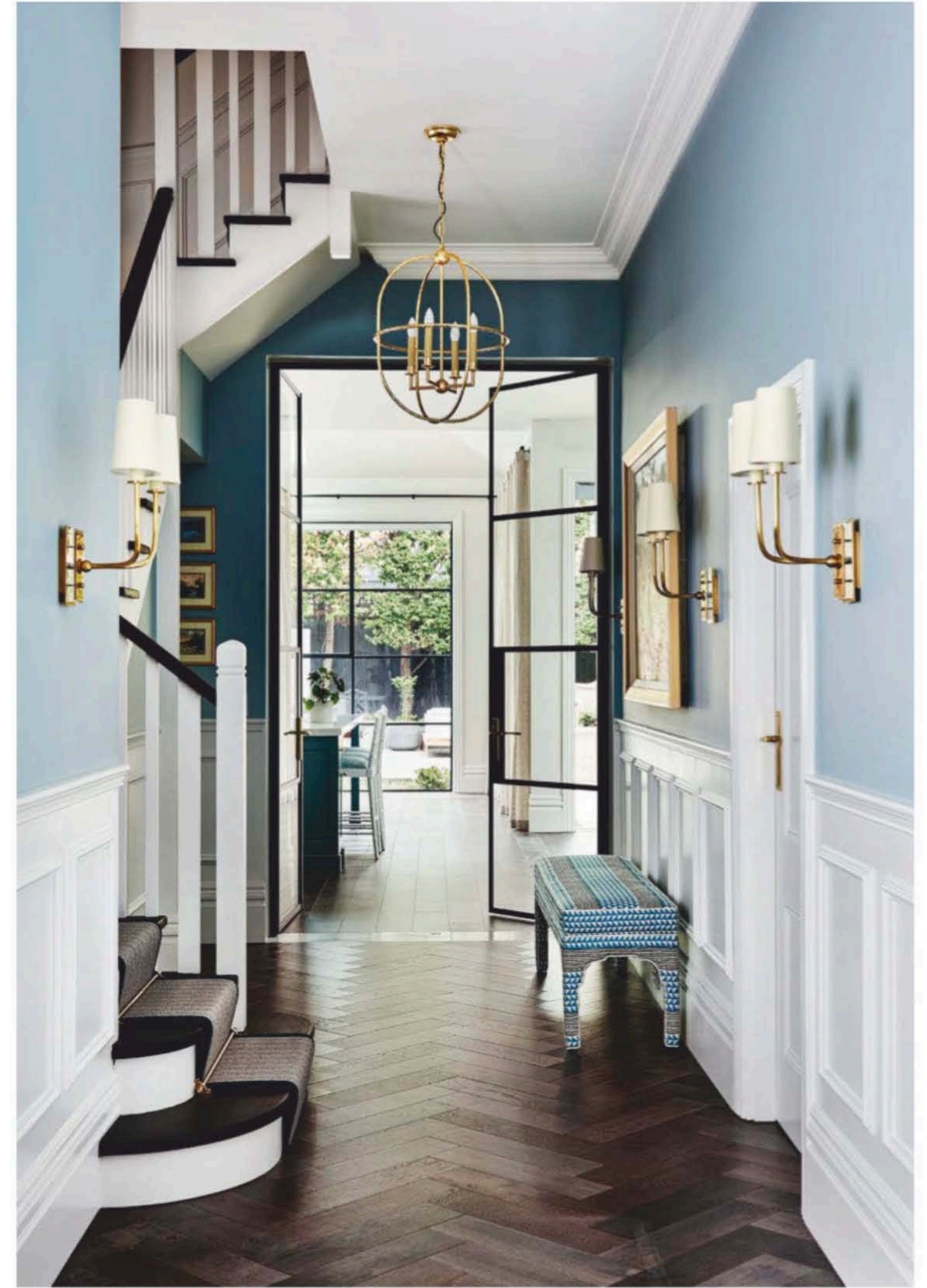


# BEAUTIFUL *homes*

MADE TO  
MEASURE  
*page 48*

PHOTOGRAPHY LISA COHEN

THE STORIES, STYLE AND LOVE THAT MAKE A HOME BEAUTIFUL



## MADE TO MEASURE

AFTER THIS MELBOURNE BUNGALOW WAS OPENED UP AND REWORKED BY A TEAM OF EXPERTS, A FAMILY OF FOUR HAS A WHOLE NEW HOME

Story CHRIS PEARSON Styling TESS NEWMAN MORRIS Photography LISA COHEN

ARTWORKS & LOVELL ACTUAL PAINT COLOUR MAY VARY ON APPLICATION

**MOODY HUES** When Lisa and Arthur moved into this Melbourne home, it had some lovely features but they knew it could be more. Six years later, they asked Terri Shannon from Bloom Interior Design & Decoration to help transform it. In the entry (opposite), a Visual Comfort 'Desmond' lantern above and 'Hulton' sconces from The Montauk Lighting Co, set the tone. 'Babe' ottoman from Arthur G in Carolina Irving Textiles 'Aegean Stripe' fabric from Elliott Clarke. 'Lourdes' table and custom chairs (below) from Chatsworth Fine Furniture. Bloom Interior Design & Decoration urn. >



**L**isa, the owner of this Hamptons-tinged home in Melbourne, knows what she likes. In her brief to interior designer Terri Shannon of Bloom Interior Design & Decoration she listed about 150 wants, room by room, from “a bit luxe” to “no sharp corners” and “pops of colour” – hence these moody blues used to brilliant effect. So it’s little wonder she achieved her dream home.

When she and husband Arthur bought the brick post-Edwardian bungalow in 2015, they saw unrealised potential. “It still had many of its beautiful original features, such as high ceilings and corning, and it was solidly built,” she says. But a rear extension was looking tired and, well, the rooms were all yellow and cream. “While the decor was dated, we knew we could do something with it as a family home that could grow with our kids.” Now aged 11 and seven, respectively, those “kids”, Freddy and Madeleine, call this bungalow home.

“We also wanted it to be more functional, with lots of storage – I am very organised – including a walk-in robe and a butler’s pantry for appliances and prepping,” says Lisa. “And the formal dining room was outdated and underutilised. We wanted to maximise every inch.”

For the overall look, she envisaged “a little bit Hamptons, but not too much, as we are not near the beach, contemporary but not too contemporary, classic and elegant.” In 2021, she recruited Peter Jackson of Peter Jackson Design to mastermind the building design and designer Terri to craft the interiors.

The formal lounge became “a man cave” for Arthur, while the old dining room was turned into a media room. And the study became a kids’ study with a desk for Lisa so she can work with them. The old cramped ensuite and walk-in robe became just the latter, while a small addition on one side of the house now accommodates the ensuite.

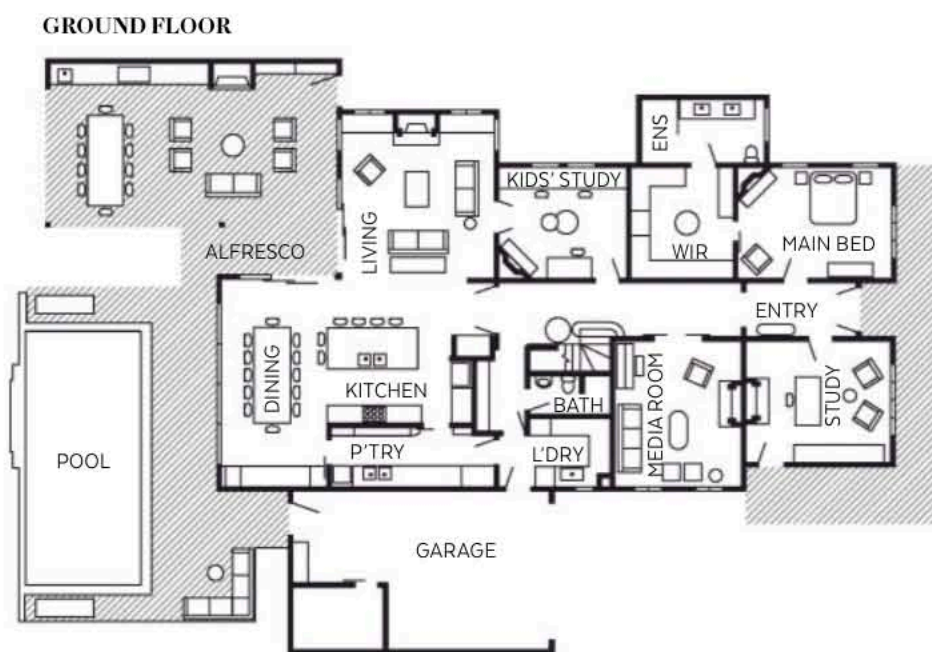
The hallway was widened, with the stair moved to the side, so visitors can now see right through the house to a light-filled open plan, which, in a brand-new extension, is connected to the garden with walls of steel-framed windows and doors. “They look so elegant with their slim frames,” says Lisa. “They let in more light, when these rooms were quite dark before.” A covered alfresco area has replaced a lawn.

Lisa also wanted panelling and wainscoting, including Shaker-style joinery, “because I love that look”, to harmonise with the stained-glass windows and corning gracing the original section.

Perhaps the palette is the most striking. “We love the colours and how they all work together, with each room having its individual identity,” says Lisa. “While our new home’s relaxing, it’s also light and bright, and lifts the mood. And every inch is utilised. We lived here for six years before we did anything, so we knew what we wanted. We are thrilled with the outcome.”

**KITCHEN** A keen cook, Lisa wanted functionality, with a central cooktop and sink. “It’s a showpiece kitchen,” says Terri of the joinery in Dulux Loveday and Dulux Natural White, and brass fittings, such as the those on the Thomas O’Brien ‘Katie’ pendants from The Montauk Lighting Co. ‘Caribbean’ barstools from Xavier Furniture give a relaxed feel. Perrin & Rowe satin brass tapware from The English Tapware Company adds warmth to the Blanco Carrara marble benchtop from Signorino. Ginger jars from Bloom Interior Design & Decoration.

FLOOR PLAN



ACTUAL PAINT COLOURS MAY VARY ON APPLICATION

**WE LOVE...  
secret zones**

The kitchen is a cook's paradise with loads of storage, however, most of the prepping takes place in the butler's pantry behind a fluted-glass door. "Every appliance is lined up in there, but they remain hidden from the main kitchen," says Lisa. The joinery also houses an entertainer's must-have, a well-equipped bar, tucked behind closed doors. >

*Beautiful* HOMES

*Beautiful* HOMES

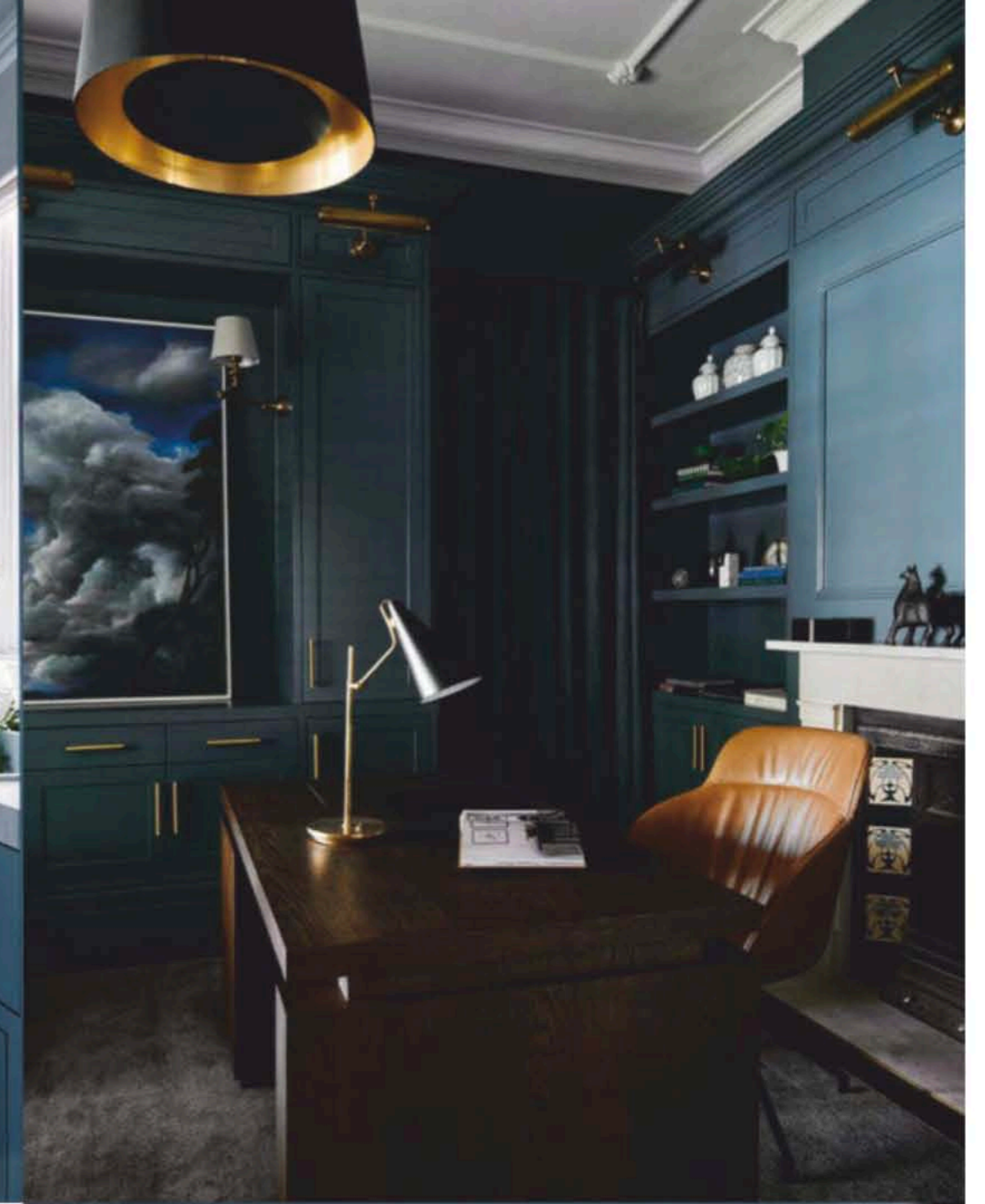
"THE window seat is AMAZING, PERFECT FOR curling up WITH A GOOD BOOK ON A RAINY DAY" LISA



**LIVING ROOM** With its easy-care materials – some furniture has covers and outdoor fabrics – this room is child-friendly, with a neutral palette. Bench seats flank the fireplace, catching the sun and providing storage, and an artwork by Jane Canfield, from the Manyung Gallery, sits atop the new marble mantelpiece surrounding the Heat & Glo I30-X gas fireplace, from Jetmaster, creating a focal point. Classic furniture includes a ‘St Pierre’ sofa (left) in Ian Mankin ‘Arran’ fabric from Domestic Textile, a ‘St Pierre’ armchair in Ian Mankin ‘Newbury’ fabric from Domestic Textile, both from Wills Furniture, and a ‘Lourdes’ console and coffee table, both from Chatsworth Fine Furniture. ‘Asha’ side table from Boyd Blue. ‘Sanctuary’ rug from Tribe Home. >



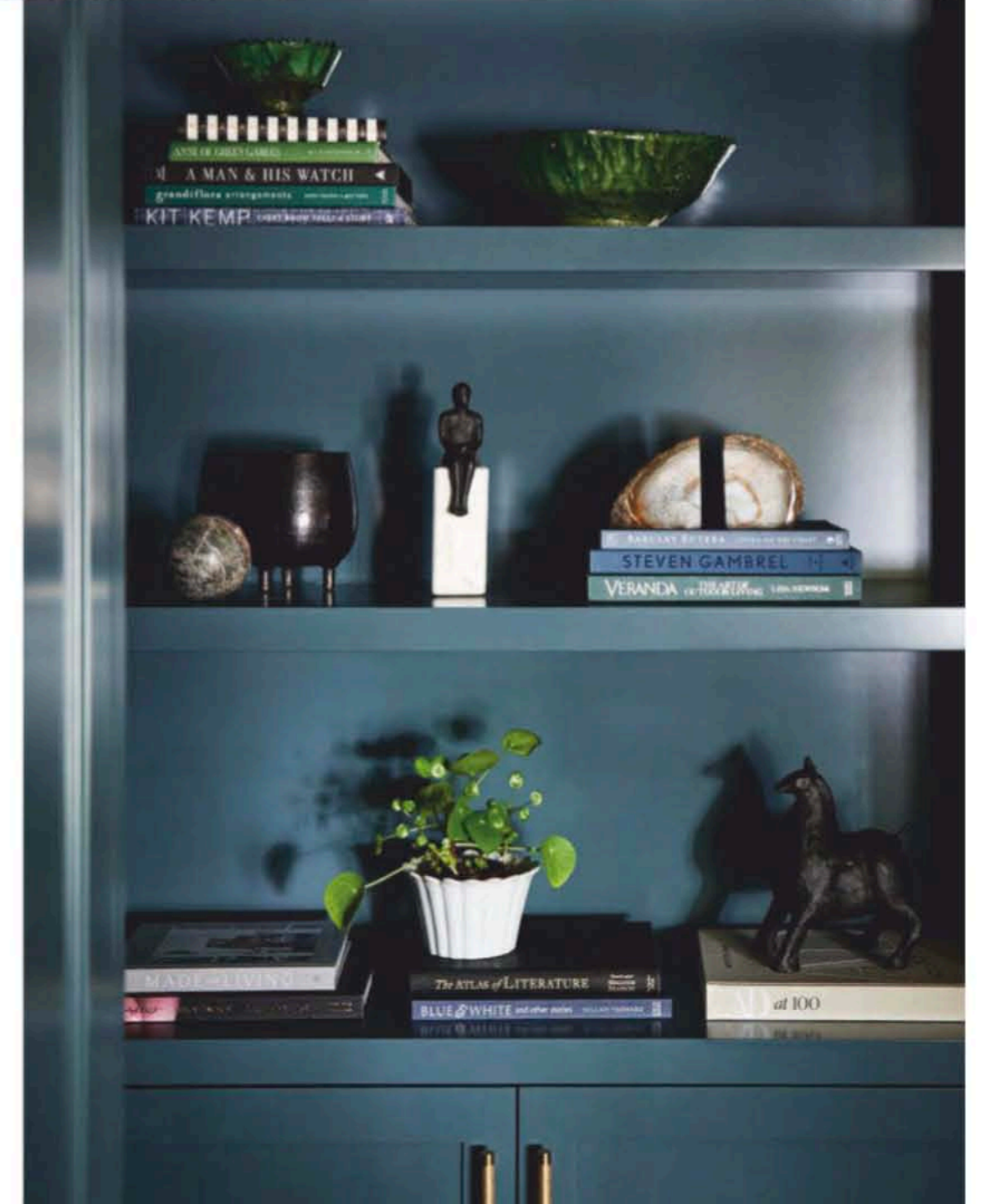
**MAIN BEDROOM** In the main bedroom, the Schumacher ‘Fern Tree’ wallpaper takes its cues from the preserved original leadlight window behind the bed. The classic blue and white palette is also picked up in the ‘Barraux’ chest from Xavier Furniture, ‘Whittaker’ table lamps from Bloomingdales and ‘Madeline Slipper’ chair from Arthur G. European pillows in (from back) Manuel Canovas ‘Pavillon de Bidaine’ fabric from Domus Textiles and Mokum ‘Infinite’ fabric from James Dunlop Textiles along with a Walter G ‘Rangoli’ cushion add another layer. The curtains in Mokum ‘Eternal’ fabric from James Dunlop Textiles and trimmed with Baker Lifestyle ‘Cordoba Braid’ sourced from Elliott Clarke. Artwork by Jane Canfield. >



“AS YOU WALK  
THROUGH THE HOUSE,  
THOSE *different blues* all  
connect beautifully TO  
ONE ANOTHER”

TERRI SHANNON, INTERIOR DESIGNER

**LAUNDRY** “I love laundry day now, because it’s so easy, with my four pull-out hampers, one’s for dirty washing, one’s for ironing, another’s washing for folding, while the other’s in the drying cupboard,” says Lisa of the laundry (top left). There’s a pull-out iron beside the drying cupboard and the washer and dryer are elevated to make them more ergonomic. ‘Moroccan Bazaar’ reproduction floor tiles from Jatana Interiors. The joinery is in Dulux Palmer. **STUDY** This space (top right & bottom right) is the ultimate “man cave” for Arthur, with a ‘Hero’ desk from Zuster, a ‘Chelsea’ pendant and ‘Clemente’ lamp, both from Bloomingdales, and an ‘Agra’ rug from Armadillo. Walls in Dulux Vipere and artwork by Min-Woo Bang, from Manyung Gallery. **ENSUITE** Thassos marble mosaic flooring and Carrara marble wall tiles, both from Byzantine Design, lend luxe to the main ensuite (opposite). “That marble taken all the way up to the ceiling makes the room look finished and so high-end,” says Terri. The vanity top in Bianco Carrara marble from Signorino is offset by Perrin & Rowe tapware from The English Tapware Company. ‘Soho’ sconces from Emac & Lawton. >



**Source book**

**Interior design:** Terri Shannon, director, Kylie Beard, senior interior designer, and Belinda Tuck, interior decorator, Bloom Interior Design & Decoration, (03) 9397 4343, bloomdesign.com.au.

**Building designer:** Peter Jackson, Peter Jackson Design, (03) 9557 4790, peterjackson.net.au.

**Builder:** Bloom Projects, 0412 655 602, bloomprojects.com.au.

**Joiner:** COS Interiors, (03) 9551 7175, cosinteriors.com.au.

**ALFRESCO** "We love entertaining friends and family," says Lisa of this outdoor room. "Because this space is heated, we can use it throughout the year and, with five skylights, it's light-filled. This feels like a resort." Meanwhile, 'Barrimah' sandstone fireplace cladding from Eco Outdoor, adds visual warmth. The 'Reef' sofa, armchairs and coffee table, 'Granada' goblet side tables, 'Livorno' white coffee table and Ethnieraft 'Bok' dining table, all from Globe West, make the space ideal for entertaining. 'Henley' dining chairs from Wisteria Design. 'Napa' rug from Satara.

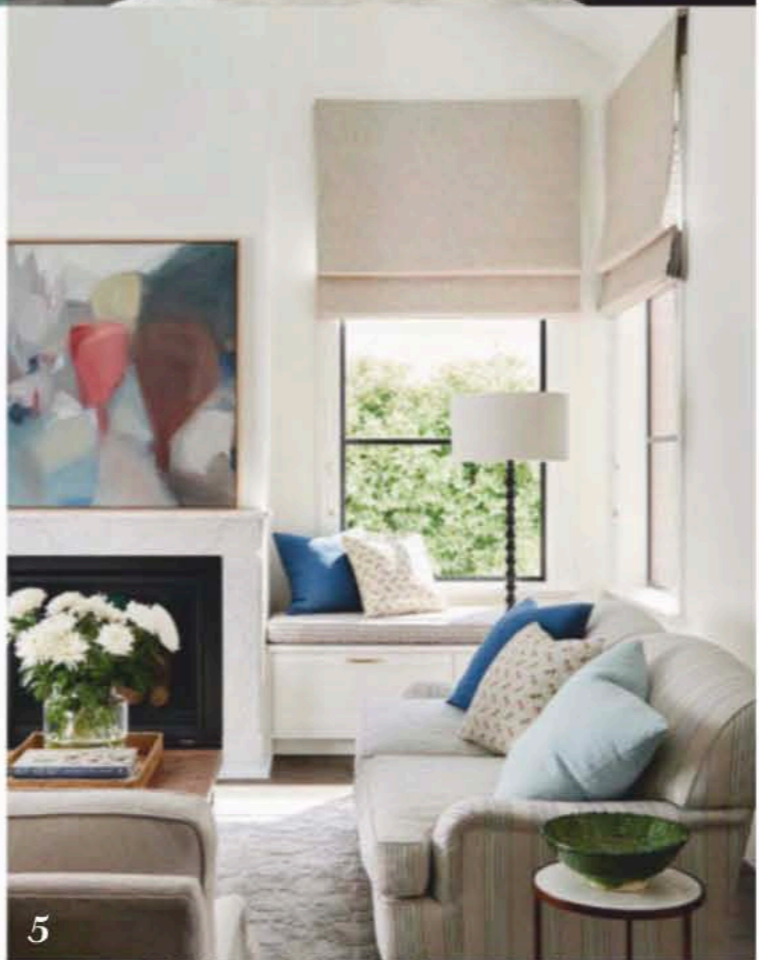
ARTWORKS UNKNOWN ACTUAL PAINT COLOUR MAY VARY ON APPLICATION



**HERITAGE BEAUTY**

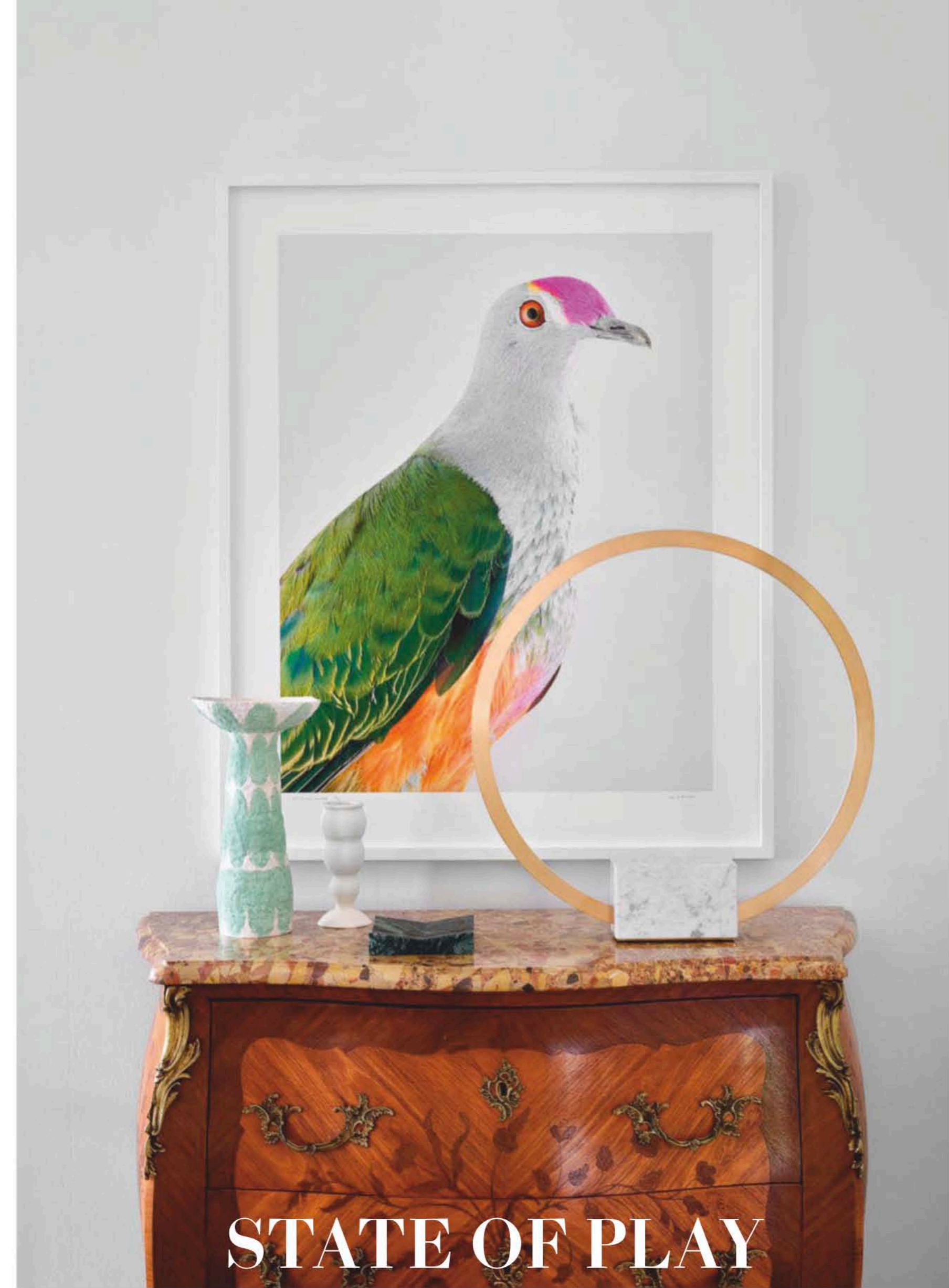


**INSIDE STORY**  
*Lisa & Arthur's home*  
*Who lives here?*  
 Professionals Lisa, Arthur and their two children, Freddy, 11, and Madeleine, seven.  
*What's your favourite space?*  
 Lisa: "It's hard to pick one feature or one space, there are so many. I just love the overall feel and how light and bright everything is, largely thanks to all those skylights in the living area, dining area and alfresco room."  
*Advice to home renovators?*  
 "Live in the original spaces for as long as you can to get a clear sense of what you want from the renovation. We lived here for six years beforehand, so we had a clear idea. Hence that list of must-have elements!"



ARTWORK (4) FELICIA ARONEY (5) JANE CANFIELD FROM MANYUNG GALLERY  
 ACTUAL PAINT COLOURS MAY VARY ON APPLICATION

1. A vase from Bloom Interior Design & Decoration in the children's study.  
 2. The masterminds of the project - (from left) Kylie Beard, Belinda Tuck, and Terri Shannon, all from Bloom Interior Design & Decoration.  
 3. In the children's study, Jordan 'Mina' chairs pair with blinds in Schumacher 'Marco' fabric in Bray.  
 4. A 'St Pierre' armchair from Wills Furniture in a corner of the media room.  
 5. A 'Bradford' sofa from Wills Furniture sits in the light-filled living room.  
 6. Cushion in Nine Muses Textiles 'Antique Spot' fabric by Tigger Hall Design on the living room sofa.  
 7. The curtains in the media room are in 'Victoria' fabric in Sapphire from James Dunlop Textiles.



**STATE OF PLAY**

**THIS HERITAGE HOME TRANSFORMATION WAS A TRUE FAMILY AFFAIR, BROUGHT TOGETHER WITH LOVE AND CARE - AND JOYFUL LAYERS OF VIVID COLOUR**

Story STEPHANIE HOPE Styling JANE GOODALL Photography ANNE STROUD