

gippsland

lifestyle / coast / country™

Autumn ISSUE #38

\$7.95

Gippsland Home
Building Gippsland

Leongatha Golf Club
Above Par

Neerim South & Jindivick
Beautiful countryside

Food, Wine Accommodation
Features inside

ISSN 1838-8124



9 771838 812004

+ Regular Features

Horoscope | Positive Lifestyle Tips | Canine Corner | Millie's Adventures

more inside



Christine's parents Jack and Vera Western originally purchased the heritage listed property known as Charnwood on a 4½ acre sloping block facing the waterfront at Inverloch in 1957. On the opposite side of a dividing laneway is a heritage home known as Shirwell, which has belonged to Christine's grandparents since the early 1900s.

Both Charnwood and Shirwell still stand today and remain in the ownership of members of Christine's family. One of her three sisters and brother-in-law own Charnwood, whilst cousins from the Western family have Shirwell.

For several decades, Charnwood provided the setting for summer holidays amongst Christine's extended family. After Christine's father died in 2006, the block was divided up between the four Western sisters, who each have an individual title within the original property.

Christine and John then set about planning their own dream home on the site that held so many fond memories for them.

The result is Western 5, a visually striking, architecturally designed property positioned close to the southern boundary of the block, just a stone's throw from the shoreline. This prime location offers 180 degree water views to the south-east and south-west and an attractive bush outlook to the north.

The double-storey home features a spacious floorplan that includes a large open kitchen, meals and living area, six bedrooms, three bathrooms, four toilets, a fully-enclosed alfresco and a 3.5 car garage with built-in storage and workbench.

A variety of reclaimed timbers have been used in the construction of the home, which blend seamlessly with the modern look of the other main materials, primarily rendered foam and Mini Orb corrugated sheeting.

Western 5 was a collaboration of the talents of local builder Mike Gibbins and Peter Jackson of Peter Jackson Design Pty Ltd, who in conjunction with Christine and John and their son John Paul, came together with a vision to create a home with the history and heritage of Charnwood and the Western family in mind.



WESTERN CONNECTIONS



When Christine Peterson and her husband John were planning the design and build of their impressive beachside home in Inverloch known as Western 5, the real essence of the project was about encapsulating the strong connections to Christine's family history with the property.

BY MEREDITH BARDWELL & CHRIS WEST

WESTERN CONNECTIONS



The Petersons have enjoyed a long association with Mike Gibbins, who has now built five houses for members of Christine's family in Inverloch.

"This house was ten years in the planning," John says.

"We had plenty of time to get everything right, but we were only ever going to have Mike as our builder. He's a stickler for detail. For him, it's got to be right. It doesn't matter what you come up with, he'll work with it."

Christine, John and John Paul were handed the keys to Western 5 shortly before Christmas in 2016 following the completion of a construction period that spanned approximately 18 months.

The finished home is everything they had hoped for and more.

"The house is a joy to us," Christine says. "It's a structure of beauty and practicality."

The rich environment of water views, bird life and the bush outlook were features that impacted how Peter Jackson Design Pty Ltd went about planning the bespoke design. It was important to the Petersons that the home included natural materials had plenty of space, warmth and natural light from every outlook.

The extensive use of recycled timbers helps give Western 5 its real point of difference and connection to the past. Christine was particularly drawn to the historical significance of incorporating old Jarrah posts salvaged from the railway tracks at Princes Pier in Melbourne, which were sourced from a timber yard at Kinglake.

In 1916, her uncle Ivan Walker had embarked from Princes Pier at age 18 to fight in the First World War on the Somme in France and never returned.

Christine and John recognised that their son John Paul's creative insights and solution-focused mindset would be a great asset to the project and he was integrally involved throughout both the design and build processes. John Paul re-designed large aspects of the home, including the addition of the second storey, with two additional bedrooms, bathroom and open living space and enclosing and extending the Alfresco/Entertainment area.

Both Christine and John had a few personal wish-list items for inclusion in the final design. For John, other than the home being a happy place for family and friends to gather, his main criteria was for it to be warm and include a music room for him.

John's wishes have been fulfilled. Wall-mounted hydronic heating and a gas log fire ensure he is never cold. Double glazed industrial windows also allow the sun to stream in and retain the warmth within the home.



Soundproofing features including double glazing to all the Industrial glass doors, internal and external, noise cancelling clips on the ceiling joists and Firecheck Insulation in the walls, have also been incorporated into the design by John Paul to ensure the enclosed alfresco area can be used without disturbing the privacy and tranquillity throughout the remainder of the home.

Christine adores her NEFF kitchen, which includes lighting under the island bench, as well as under the bench in the walk-in butler's pantry.

"We usually only have those lights on at night and can just sit and watch the sunsets. It's really quite beautiful," Christine remarks.

"I also love the black reflective splashback in our kitchen and the French Oak floor," she adds.

Upon entering Western 5, you instantly feel the richness of the natural materials and the light surrounding you. The inclusion of seven skylights along with floor to ceiling windows ensures the home is filled with brightness and natural light.

There are subtle curves throughout the home that soften the straight lines. Christine mentions that a Timorese friend suggested this as an important feature in a home.

The house has flexibility. A staircase built from reclaimed timber leads to the upstairs level which includes its own living space and two of the home's six bedrooms, along with a Murphy bed to add to its capacity to accommodate flexible numbers of guests.

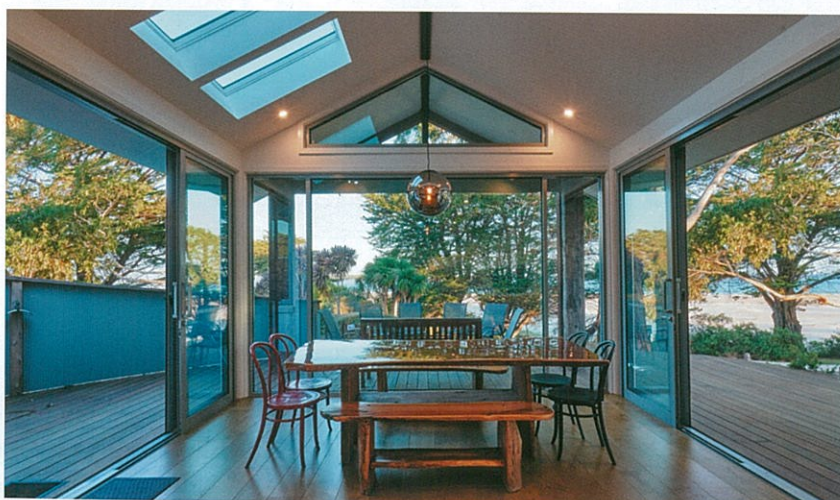
With its spaciousness and the versatility of the features in its floorplan, Western 5 is a great house to be creative in and is perfect for entertaining.

"The design of the house is about being very inclusive," Christine says.

"I have a large extended family and have always adopted an open house approach to people visiting or staying with us."

The home stays cool and comfortable in summer. Large sliding glass doors with Freedom Retractable insect screens can be opened up to allow the refreshing sea breeze to filter through.

Mike Gibbins says that from a builder's perspective, the main challenges in the construction of the home were figuring out how to pull all the timbers together and how the connections would work. The complexities of the roof also presented some challenges for the younger tradesmen in his team, but Mike is proud of the end result of all his work on Western 5.





"You can't build a home like this with any great speed," he observes.

"As I look over the house I appreciate all the angles. Everywhere you look there's detail. I think it's probably the most interesting house in Inverloch."

Mike and his team enjoyed working with the natural and recycled materials such as the upstairs window frames restored from the original Charnwood property.

Such is the quality and uniqueness of the home, Peter Jackson Design Pty Ltd entered Western 5 into the 2018 BDAV Awards, where it received a commendation for excellence in the use of recycled materials.

Milled timber from Coastal Manna Gums cleared from the block prior to construction was also saved for use in landscaping furniture outside the home.

For Christine, John and John Paul, Western 5 has successfully achieved its aims. The long hours of deliberations and decision making in the planning process ultimately paid off. They now enjoy living in their beautiful home that has been created in faithfulness with the property's historic past, whilst adding the best in contemporary design features to ensure many new memories are made for their family today and in the future generations to come.

Photography courtesy of Peter Jackson Design P/L
Ph. 03 9557 4790 | www.peterjackson.net.au

