



Wisher Residence, Inverloch, designed by Peter Jackson Design Pty Ltd...
Another Award-Winning BDAV Member Project!



COLORBOND® Steel - proudly supporting



Cover Story:**Project Profile: Peter Jackson Design - Fisher Residence, Inverloch**

Peter Jackson Design Pty Ltd won the award for "Residential Design – New Houses: up to \$300,000 construction cost" in the BDAV 2007 Building Design Awards for the Fisher Residence, Inverloch. The client wanted a single-storey, low cost, resort-style residence on a small, irregular, flat block in the seaside township of Inverloch. The pavilion style free-flowing open plan layout has maximised space without waste. The 'L' shape connects the inside with the outside sun drenched courtyard. The residence harmonises perfectly with its exotic landscaping. Vertical and horizontal componentry provide a sense of balance, whilst the interaction between inside and out offer the perception of space and intrigue.



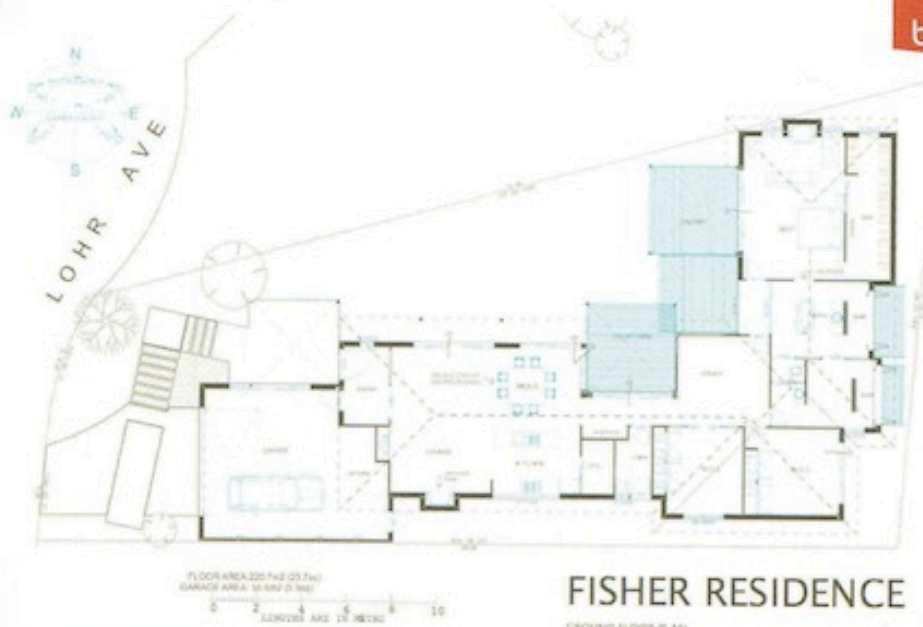
provides functionality, but also gives rise to varying options as the moods or demands desire. The bathroom is an integral part of the total ambience and not merely an out of sight convenience.

The interior design is compact but spacious.

The 'Aquarius effect' dedicated a large proportion of the home to the two bathrooms. The showers both open onto a private courtyard, and the open plan formula is evident from, and to every area.

The project features an extra-ordinary bathroom design. Openness, discretion and interaction with its exterior are all elements of the bathroom. The bathroom not only

Sleek fittings and fixtures adorn every space, and have been tastefully chosen to embellish the exotic atmosphere, adding their own colour to a space, and enhancing feature colours on display.

Fisher Residence

bdaV

The Judges observed that the designer has created a picturesque building in response to a brief for a home with the ambience of a resort. Lyrical gestures such as the circular openings assist in carrying a theme throughout the entire house and beyond to the street frontage, resulting in a thoroughly integrated project. The residence has been designed with interest and intrigue at every turn. It is simple but interesting. It is low cost, but exudes opulence beyond its budget. A most worthy award winner!



The master suite (above) was an important feature in this home. Three key elements emerged from this room, with the link back to water, the direct relationship between indoor/outdoor areas, and the open plan formula.

(Top right.) Water was a very important factor in this home, with the owner making a point of being an Aquarius, this pond plays on the entrance hole and immediately introduces the element of water.



This photograph (right) shows the open plan living area. The design is simple and effective. Details such as the ceiling coffer over the dining table define areas, and avoids a flat expanse of plasterboard



Photograph (below) shows the entry into the home. With a strong emphasis on indoor/outdoor relationships the entrance enters directly into the home's distinctive garden area.



Acknowledgements

Designer Peter Jackson Design Pty Ltd
 www.peterjackson.net.au
 Photographer Peter Jackson
 Structural Engineer Mark Stellar & Associates
 Soil Engineer Civil Test Pty Ltd
 Building Surveyor ... Gippsland Building Approvals
 Land Surveyor Beveridge Williams

Materials used include:

Roofing BlueScope Steel
 Plasterboard CSR Gyprock
 Wall Framing & Trusses
 Capeview Frames & Trusses
 Brickwork Boral Bricks
 Glass Pilkington
 Windows Toranto Windows